

Phoebe Leech

Phoebe Leech (b. 1999, Yorkshire) is a British figurative painter based between Oxford and London. She graduated with First Class Honours in BA Fine Art at City & Guilds of London Art School in 2025. Her large-scale portraits explore the human condition through vulnerable subjects, expressive gesture, and an unflinching attention to the body.

Leech's practice is defined by gestural mark-making that intertwines identity, psychological tension, and emotional intensity. In her final year at City & Guilds of London Art School, she developed her work in dialogue with artists such as Justin Mortimer and Jonathan Williams.



Her recent series, *Male Domesticity*, interrogates contemporary masculinity by capturing moments of quiet vulnerability edged with latent aggression. Figures are partially abstracted, and their bodies often appear scratched, blemished, or smeared with saturated pigment. The surface is fragmented, smeared with saturated colour, evoking both bodily presence and erasure, while inviting viewers to contemplate what is masked and what lingers beneath.

Phoebe Leech CV

Education

2025 BA Fine Arts, City & Guilds of London Art School, First Class Honours

2021 UAL Level 3 Foundation Diploma in Art and Design, Oxford Brookes University

Solo Exhibitions

2022 *Solo Show*, Oxfordshire Artweeks, Oxfordshire, UK

Group Exhibitions

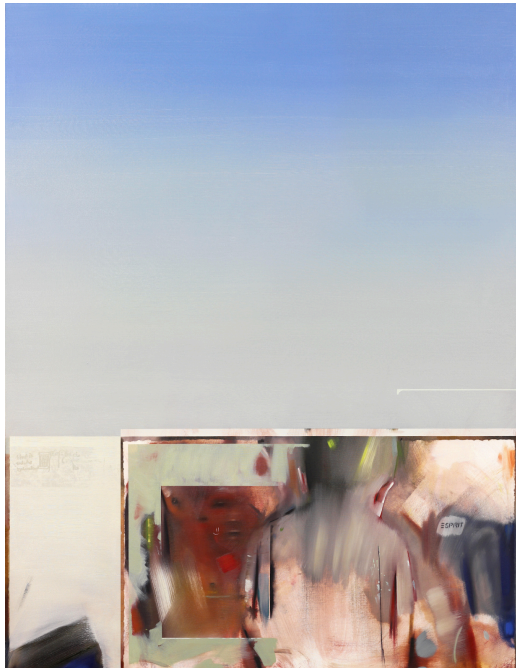
2025 *Summer Group Show*, JD Malat Gallery, London, UK

2025 *Degree Show*, City & Guilds of London Art School, London, UK

2024 *Salon*, Stokey Pop-Up, London, UK

2023 *From the Studio*, City & Guilds of London Art School, London, UK

Selected works



Phoebe Leech
Esprit Déteint, 2025
Oil on linen
84 1/4 x 63 in
214 x 160 cm



Phoebe Leech
Justin Mortimer, 2025
Oil on linen
84 1/4 x 63 in
214 x 160 cm